

# Knowledge Updates

## Series 1

### Cystic Ovarian Degeneration

Initiative from

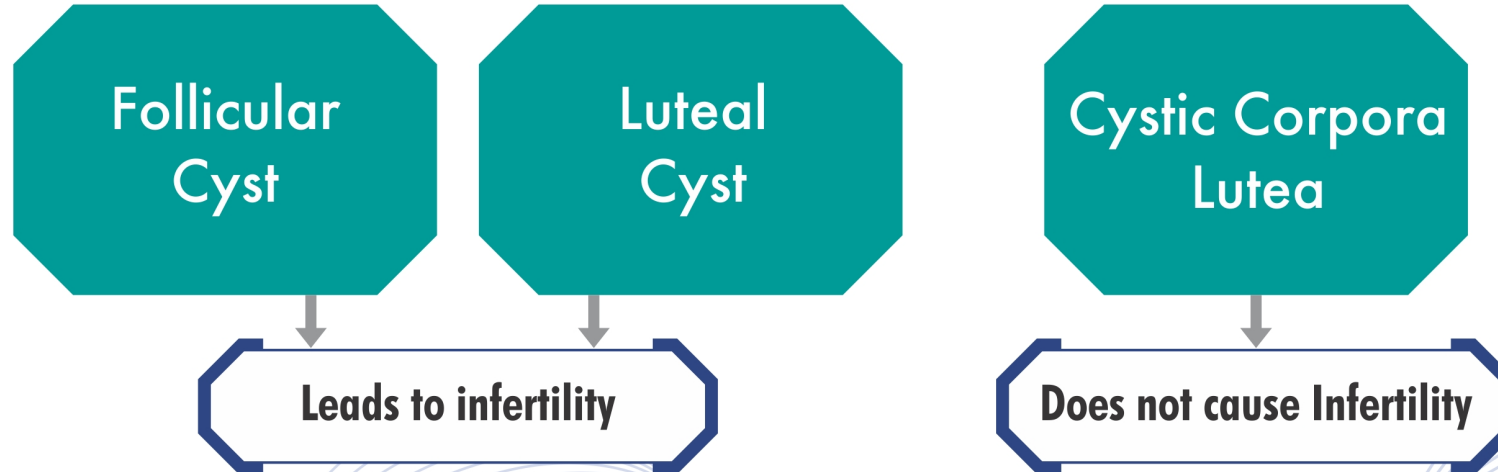


**MSD**

Animal Health

## Cystic Ovarian Degeneration

A common, clinically recognized cause of infertility in dairy cattle is characterized by one or more large anovulatory follicles(s) in one or both ovaries that persist for at least 10 days in the absence of a corpus luteum, and by abnormal oestrus behaviour



## Follicular Cyst

The presence of a thin-walled, fluid-filled structure  $>25$  mm diameter and present for  $>7$  days in the absence of a CL on the ovary.



may reach to  
4 - 6 cm in diameter

## Follicular Cyst - Symptoms



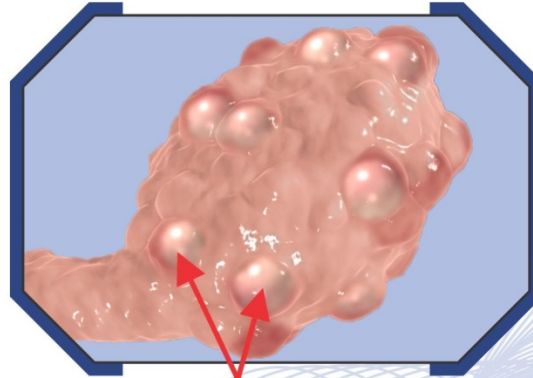
Irregular Estrous



Nymphomania

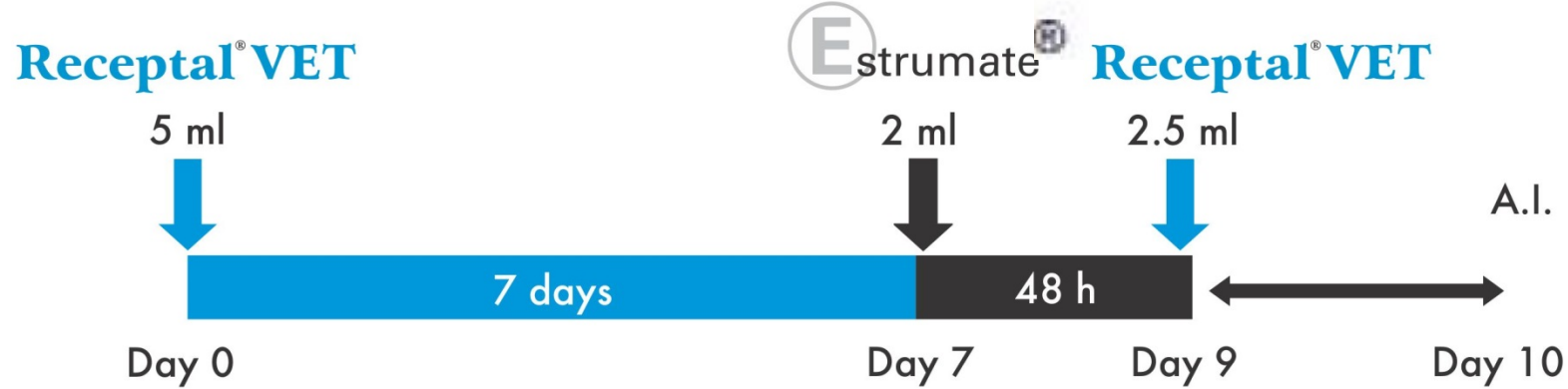


Sterility Hump



Multiple cysts

## Follicular Cyst - Treatment Protocol



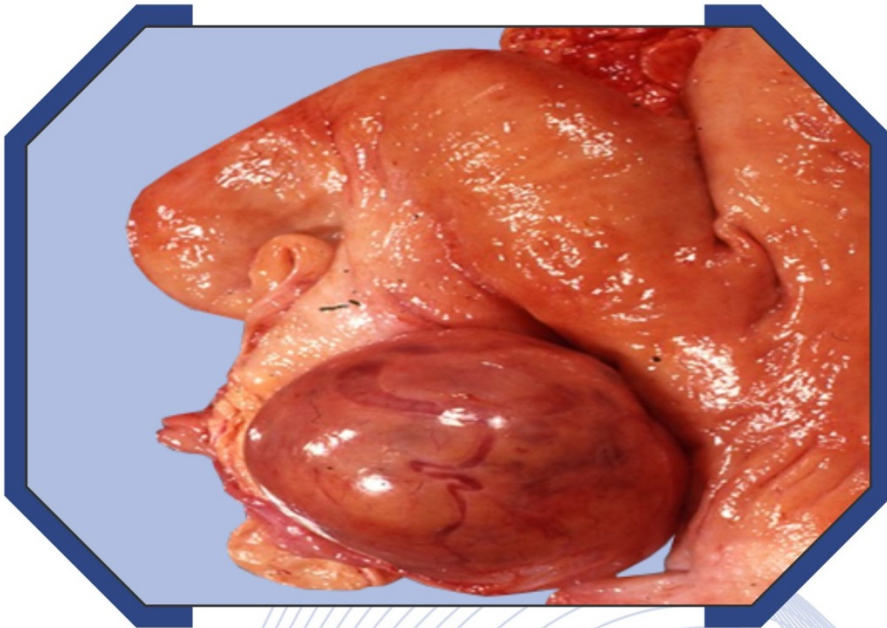
Wk	Mon	Tue	Wed	Thur	Fri	Sat	Sun
1	Receptal <sup>®</sup> VET 5ml IM						
2	Estrumate <sup>®</sup> 2ml IM		Receptal <sup>®</sup> VET 2.5ml IM	A.I.			

Do not rupture cyst manually

## Luteal Cyst

Luteal cystic ovary disease is characterized by enlarged ovaries with cyst, the walls of which are thicker than those of follicular cysts because of a lining of luteal tissue

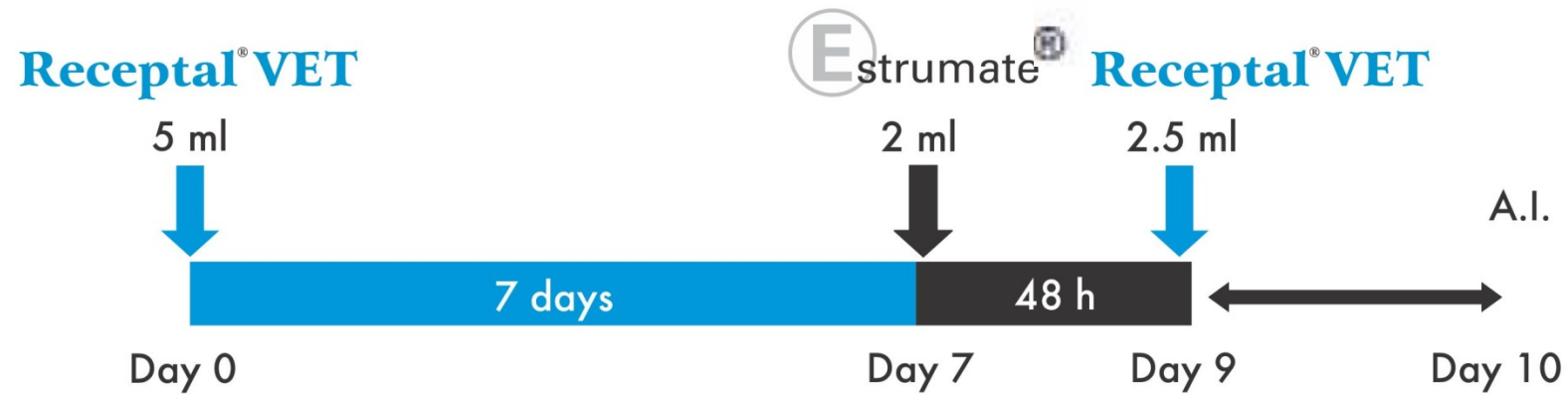
structure >25 mm diameter



## Luteal Cyst - Symptoms

- Anestrous behavior
- Rectal palpation reveals a quiescent uterus

## Luteal Cyst - Treatment Protocol



Wk	Mon	Tue	Wed	Thur	Fri	Sat	Sun
1	Receptal® VET 5ml IM						
2	Estrumate® 2ml IM		Receptal® VET 2.5ml IM	A.I.			

Do not rupture cyst manually

A PRINCIPLE  
FOR ALL TIME



**“Medicine is for the people. It’s not for the profits.”**

*George Merck*

**Intervet India Pvt. Ltd.**  
33, Pune-Nagar Road, Viman Nagar, Pune -411014, India.  
Ph. No.: +912066294700-01, Fax: +91 2066050410,  
Email: [info.india@merck.com](mailto:info.india@merck.com), [www.msd-animal-health.co.in](http://www.msd-animal-health.co.in)

